

表 紙

EXPERIMENTAL MATHEMATICS

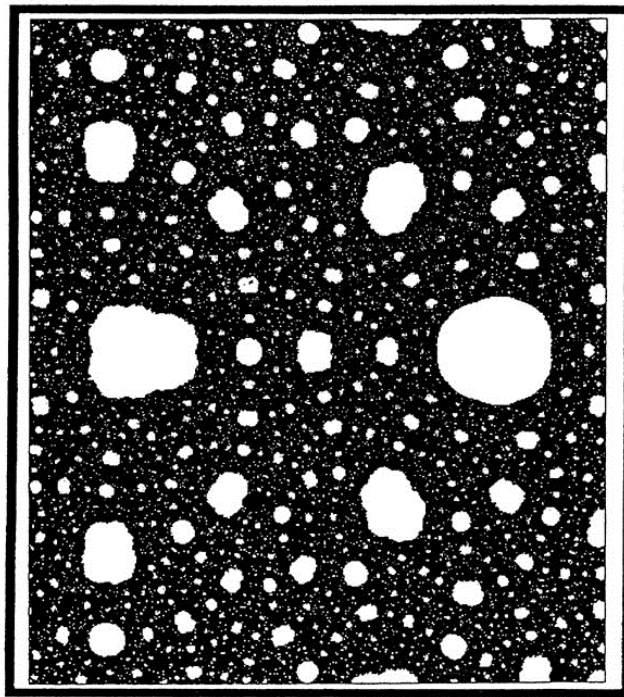
VOLUME 2, NUMBER 1 1993

Chief Editor
David B.A. Epstein

Editor
Silvio Levy

Associate Editors
Frederick J. Almgren
Henri Cohen
Robert L. Devaney
Ronald L. Graham
David A. Hoffman
Rafael de la Llave
David Mumford
Ulrich Pinkall
Peter C. Sarnak

Advisory Board
Hendrik W. Lenstra, Jr.
Albert Marden
Jean-Pierre Serre
William P. Thurston



A K PETERS, LTD

課題 16

表紙裏

EXPERIMENTAL MATHEMATICS

EXPERIMENTAL MATHEMATICS is a journal devoted to experimental aspects of mathematics research. It publishes formal results inspired by experimentation, conjectures suggested by experiments, descriptions of algorithms and software for mathematical exploration, surveys of areas of mathematics from the experimental point of view, and general articles of interest to the community.

Chief Editor

David B.A. Epstein, University of Warwick, dbae@maths.warwick.ac.uk

Editor

Silvio Levy, Geometry Center, University of Minnesota, Minneapolis, levy@geom.umn.edu

Associate Editors

Frederick J. Almgren, Princeton University, almgren@geom.umn.edu

Henri Cohen, University of Bordeaux, cohen@alioth.greco-prog.fr

Robert L. Devaney, Boston University, bob@math.bu.edu

Ronald L. Graham, AT&T Bell Labs, rlg@research.att.com

David A. Hoffman, University of Massachusetts, Amherst, david@smectos.gang.umass.edu

Rafael de la Llave, University of Texas, Austin, llave@math.utexas.edu

David Mumford, Harvard University, mumford@math.harvard.edu

Ulrich Pinkall, Technische Universität Berlin, 1808@db0tuz01.bitnet

Peter C. Sarnak, Princeton University, sarnak@math.princeton.edu

Advisory Board

Hendrik W. Lenstra, Jr., University of California, Berkeley, hwl@math.berkeley.edu

Albert Marden, Geometry Center, University of Minnesota, Minneapolis, am@geom.umn.edu

Jean-Pierre Serre, Collège de France, Paris, serre@dmi.ens.fr

William P. Thurston, MSRI and University of California, Berkeley, wpt@math.berkeley.edu

Submission information: see back of this issue.

Copyright: All articles published in this journal are protected by copyright, which covers the exclusive rights to reproduce and distribute the article, as well as all translation rights. No material published in this journal may be reproduced photographically or stored on microfilm, in electronic data bases, video disks, etc., without first obtaining written permission from the publisher. The use of general descriptive names, trade names, trademarks, etc., in this publication, even if not specifically identified, does not imply that these names are not protected by the relevant laws and regulations.

While the advice and information in this journal is believed to be true and accurate at the date of its going to press, neither the authors, the editors, nor the publisher can accept any legal responsibility for any errors or omissions that may be made. The publisher makes no warranty, express or implied, with respect to the material contained herein.

Special regulations for photocopies in the USA: Photocopies may be made for personal or in-house use beyond the limitations stipulated under Section 107 or 108 of U.S. Copyright Law, provided a fee is paid. This fee is US \$0.50 per page. All fees should be paid to the Copyright Clearance Center, Inc., 21 Congress Street, Salem, MA 01970, USA, stating the ISSN 1058-6458, the volume, and the first and last page numbers of each article copied. The copyright owner's consent does not include copying for general distribution, promotion, new works, or resale. In these cases, specific written permission must first be obtained from the publisher.

Subscription information: Experimental Mathematics is published quarterly. Each volume contains four issues.

Annual subscription rate per volume: US \$130.00 (single issue \$40.00) plus postage and handling. Orders can be placed with any subscription agency or directly with A K Peters, 289 Linden Street, Wellesley, MA 02181, USA.

Phone: 617-235-2210 FAX: 617-235-2404 E-mail: expmath@geom.umn.edu

Changes of address: Allow six weeks for all changes to become effective.

All communications should include old and new addresses and should be accompanied by a mailing label from a recent issue.

Back volumes: Prices are available on request.

Copyright©1993, A K Peters, Ltd.

About the cover: A quadratic-map Julia set homeomorphic to a Sierpiński carpet. See pages 42-45.

◆ 出版者に注意